



EURISE

DALIVERSITY





How did you feel at 18 ?

**Excited? Maybe.
But also... lost?**



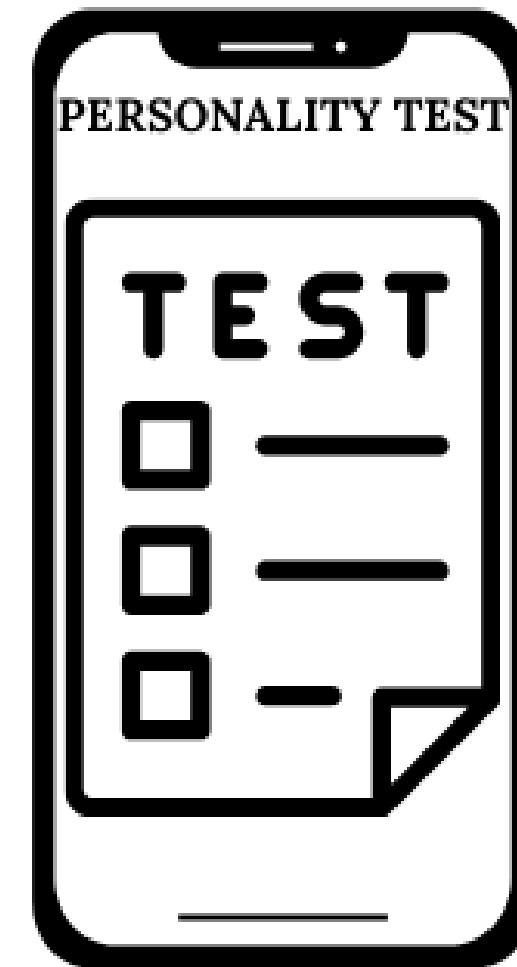
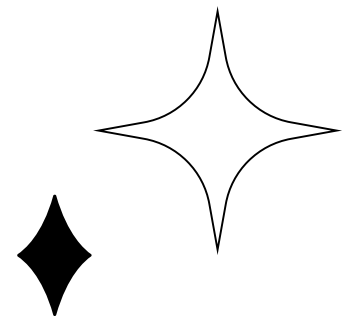
Meet Ziggy,
a prospective user of EURISE





Phase 1 - Self-discovery:

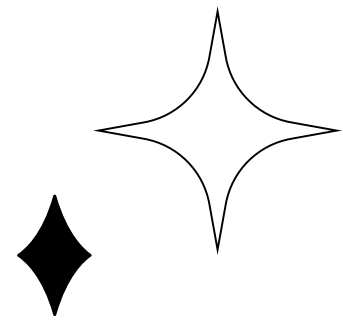
Finding out about your
talents, skills, personality





Results

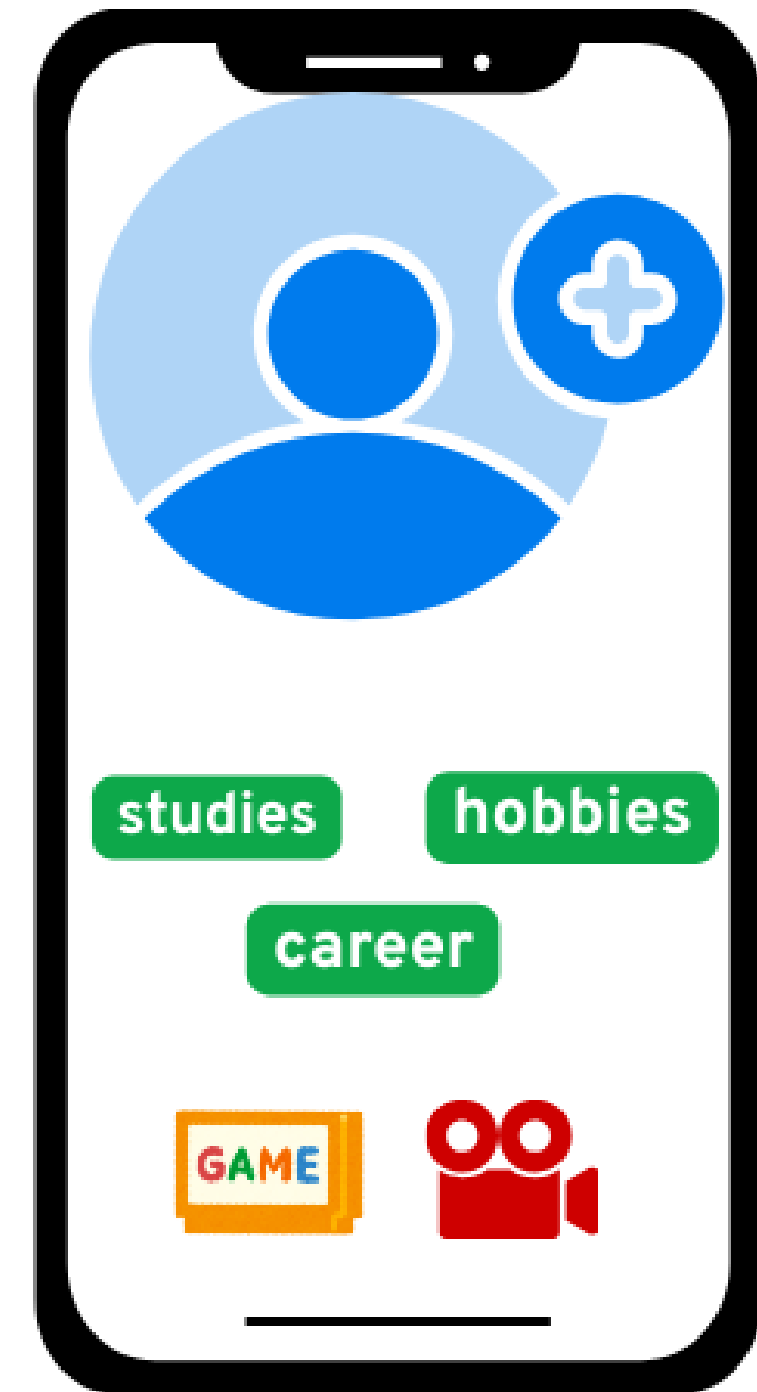
Showing role models and
their similarities to you



Phase 2 - Exploration:

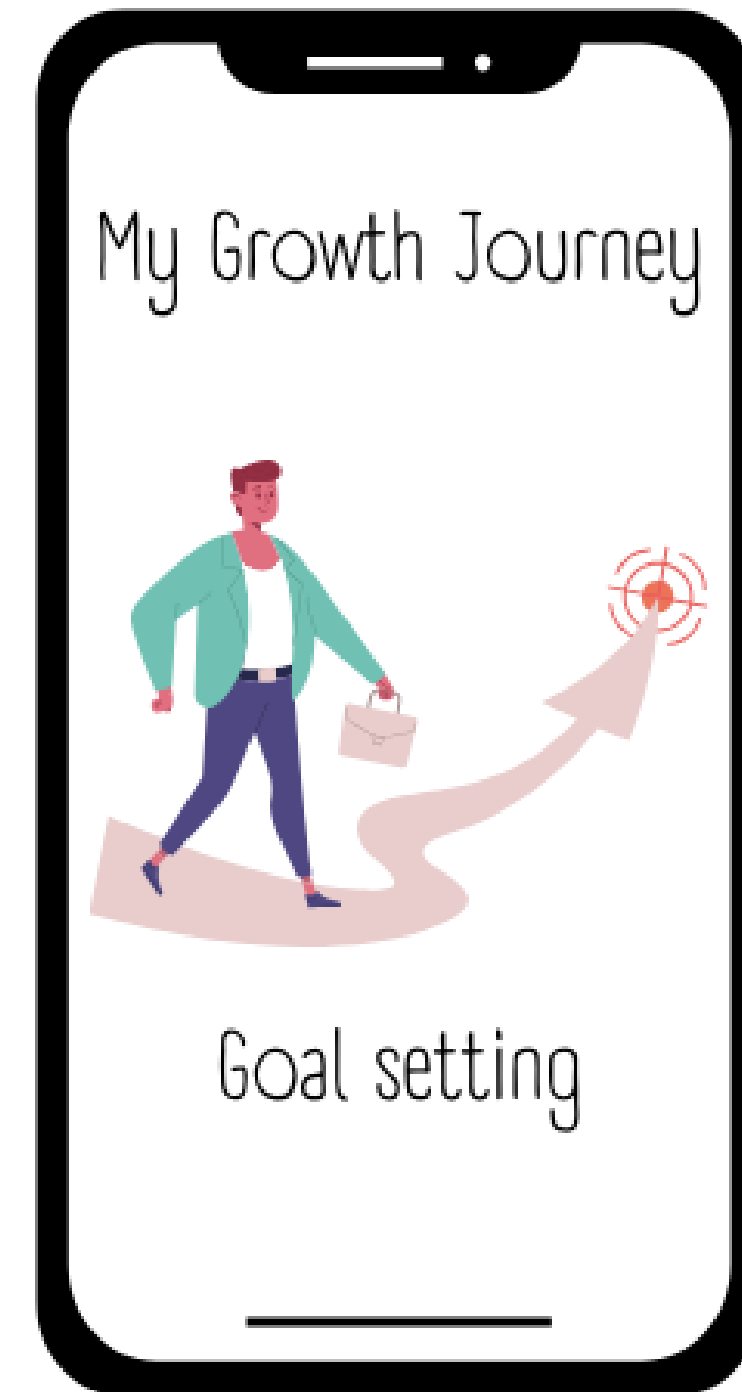
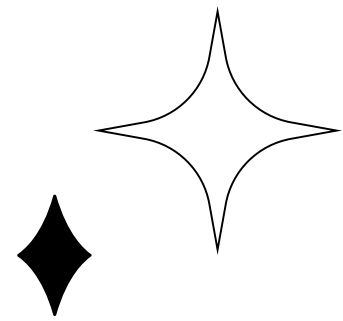
Suggesting hobbies,
interests, things to try out

→ this helps identify your strengths and passions



Phase 3 - Visualization:

Create your “future self”
storyboard and set your goals

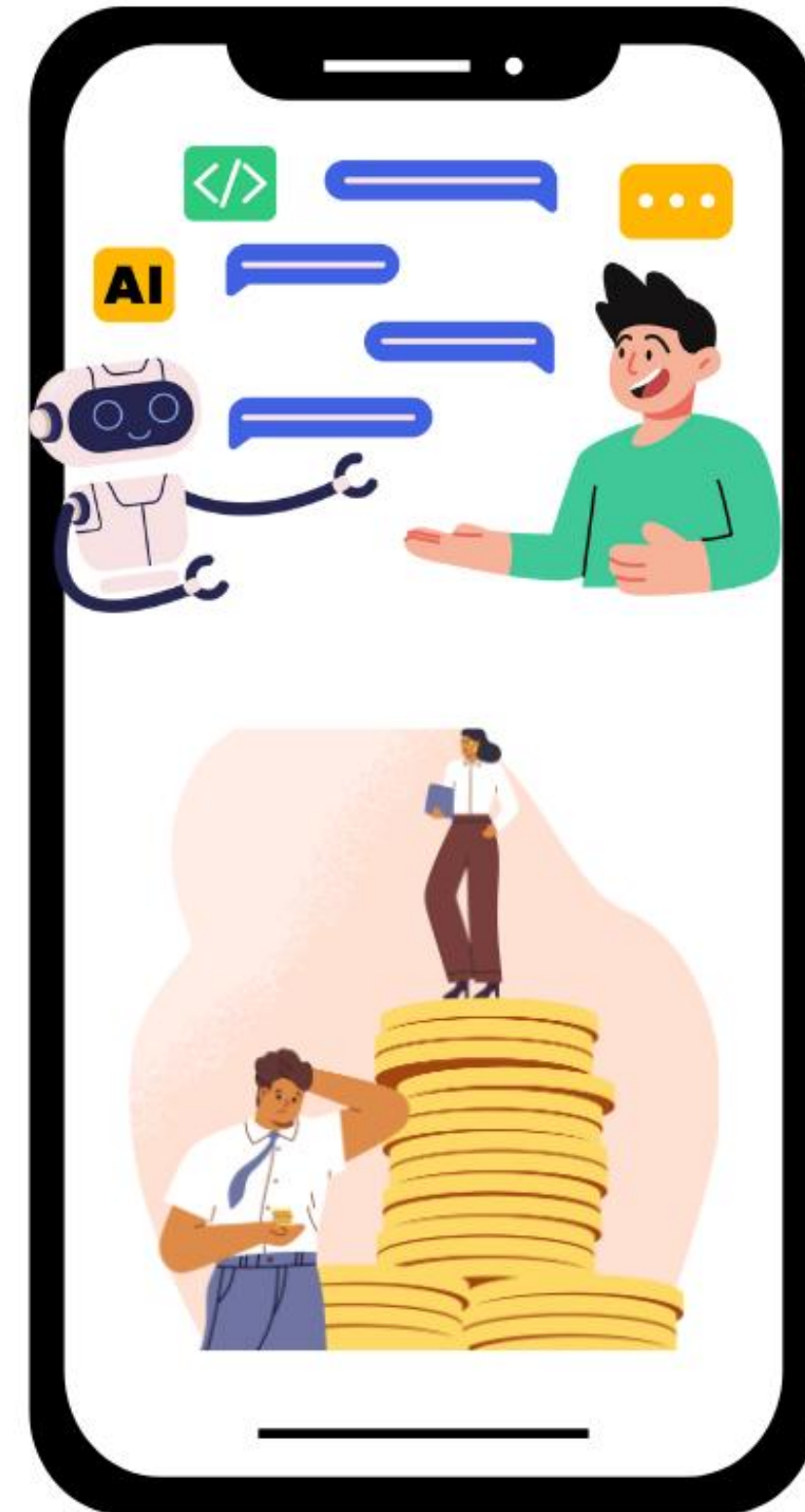


◆
Phase 4 -

Experimentation:

Connecting to experts, showing
possible paths

◆ ◆



◆

Phase 5 - Application

Supporting students
applying to universities

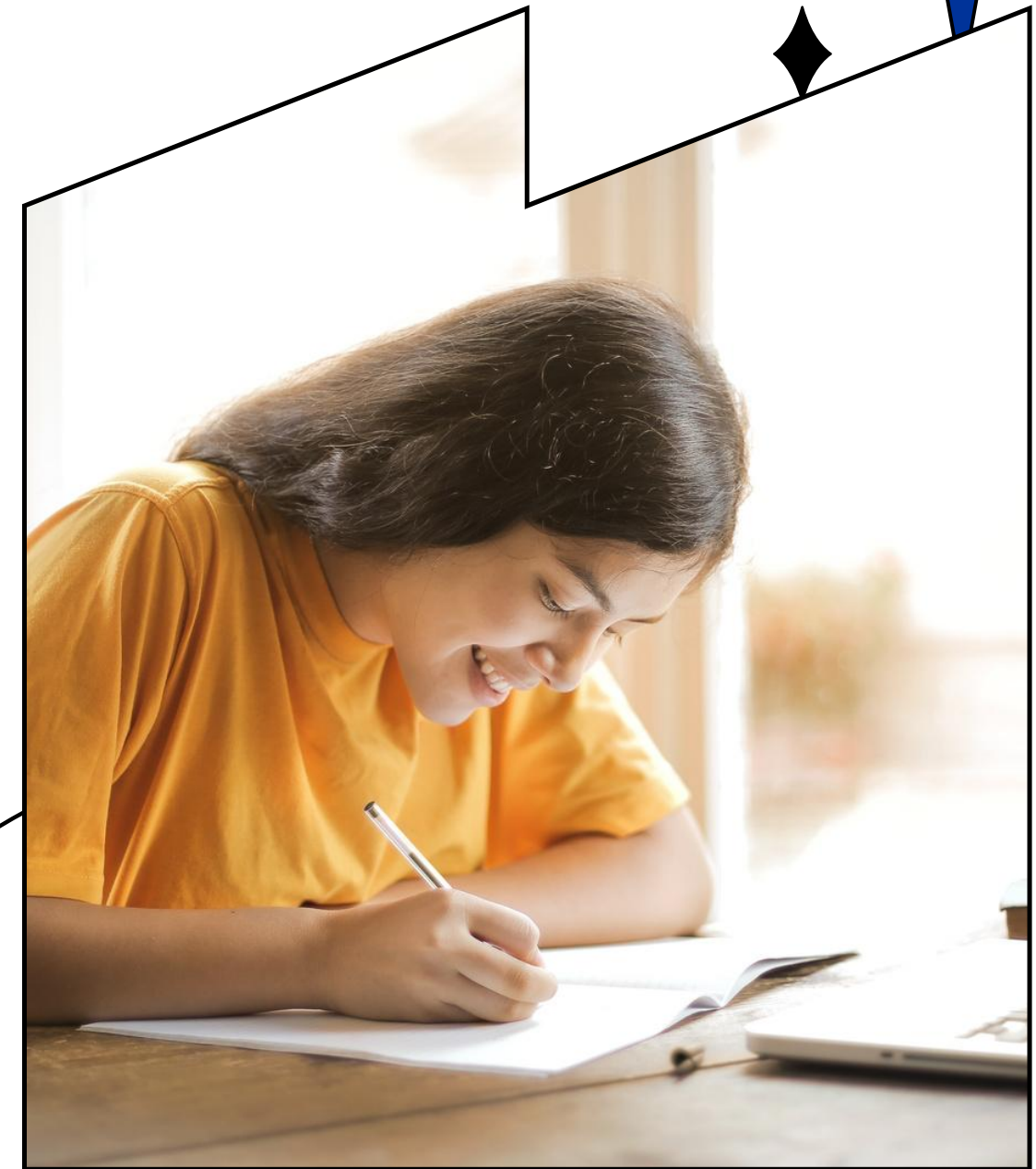
◆



Why does it work?

**Most tools tell you what to do.
We help you understand who you are.**

- ✓ Self-discovery, not school pressure
- ✓ AI that reveals hidden strengths
- ✓ From reflection to real-world action
- ✓ For those with fewer options
- ✓ Motivation through clarity
- ✓ Visualize new opportunities





Feasibility

Technology:

- Mobile-first web app using existing open-source tools for assessments (e.g., VIA Survey API)
- Scalable architecture for onboarding schools and students

Content & Expertise:

- Strengths-based curriculum co-designed with educators, career counselors, and psychologists
- Role model stories sourced from real professionals and alumni networks

Pilot-ready:

- MVP testable with a single university, 3 degree paths, and a curated mentor pool



Viability

Revenue Model:

- Free for students; freemium features for institutions (team insights, custom reports)
- Sponsored resources and mentor programs by partner companies, enhancing their CSR and employer branding

Partnerships:

- Universities: content, student access, validation
- Companies: mentorship, internship placements, platform sponsorship
- Foundations/NGOs: support for underrepresented students

Impact Potential:

- Supports social mobility and SDGs (Quality Education, Reduced Inequalities)



Social Impact and Inclusion

- **Empowered Decision-Making:** Students gain clarity on strengths and future paths.
- **Increased Equity:** Personalized guidance for those without access to mentors or career support.
- **Stronger Belonging:** Role models and team formation foster identity, motivation, and self-worth.
- **Widened Opportunity Access:** Students from disadvantaged backgrounds explore careers they may not have known existed.

AI Integration in the Platform

- **AI-Powered Strengths Test:** Analyzes responses to identify personality traits and core strengths.
- **Smart Recommendations:** Suggests personalized study paths, careers, and even hobbies aligned with users' profiles.
- **Mentor & Team Matching:** Machine learning pairs students with mentors and peers based on shared values and complementary skills.
- **Adaptive Coaching:** AI agent/chatbot helps users reflect, set goals, and stay on track with tailored nudges.



They made it, why can't you?

"No one ever told me what I was good at.
Now I finally see it for myself."

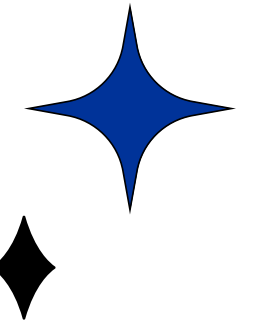
— *Anis, Portugal*

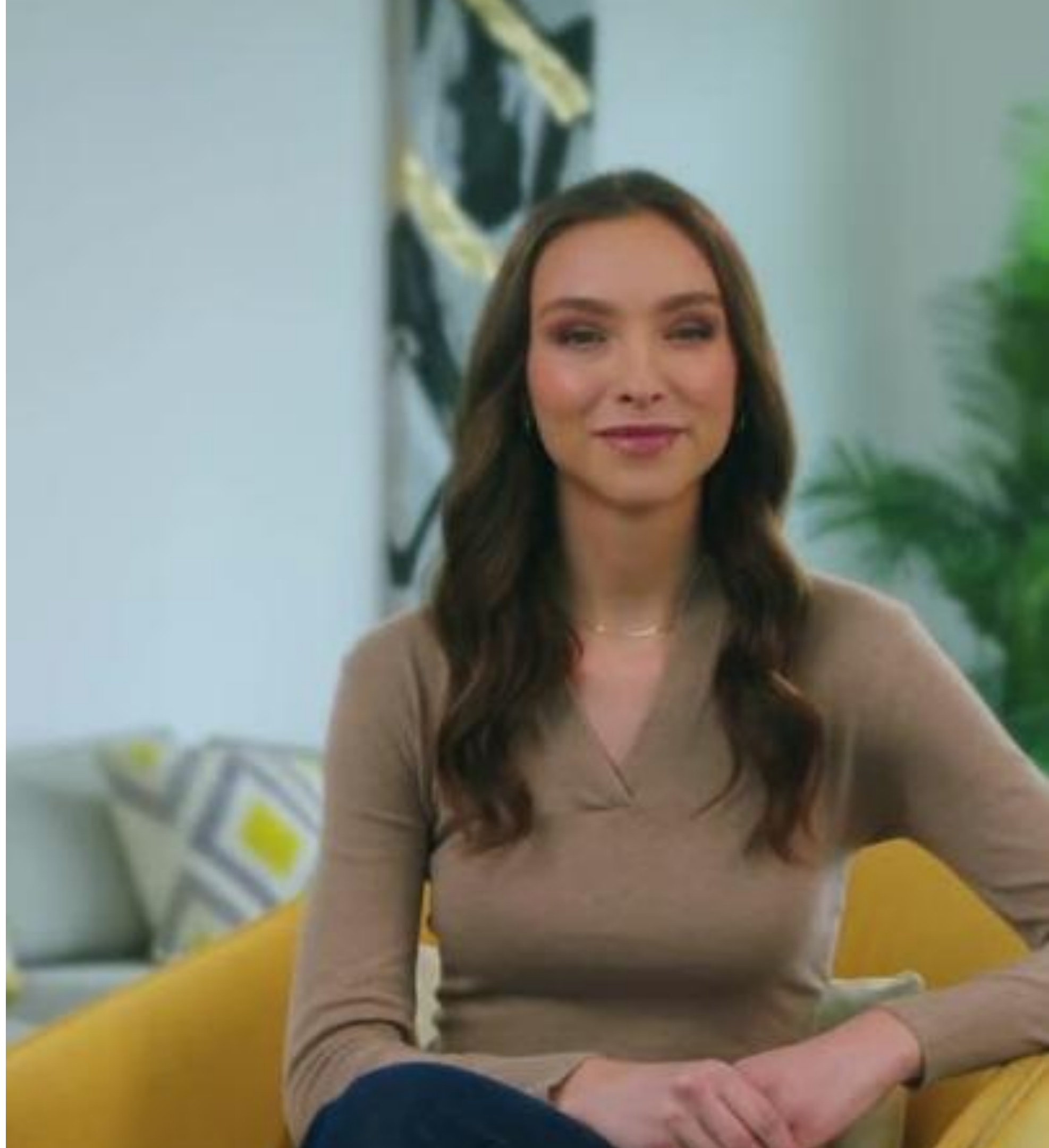
"I thought I had nothing to offer. Turns out,
I'm a natural strategist."

— *Maria, Bulgaria*

"The AI made me feel like someone finally
listened."

— *Youssef, France*





EURISE

 **START YOUR JOURNEY
FOR FREE!**

